







1990  
B  
C  
A  
F

C  
D  
24  
A  
F

A  
D  
F  
D  
E

24  
C  
D  
S

C  
D  
A  
F

A  
E  
A  
-2 2  
D  
1-1  
A  
1-1

F  
E  
E  
12  
67283.

D  
D  
D

C  
C  
A  
F

E

C  
C  
C

8:30 8:55  
F

Di A  
-2 2

F A





State of Florida  
Section 21  
C  
A

- First-year students: The first 6 weeks of

Bl  
C  
A

- State of Florida statutes dictate that it is

21  
C  
A

**It is unlawful to sell, give, serve or permit**

21  
f

f  
A

- It is unlawful to be under the influence of,

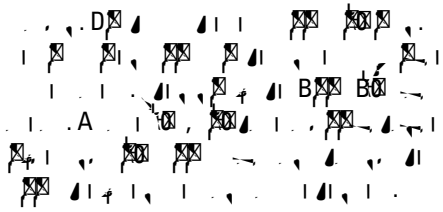
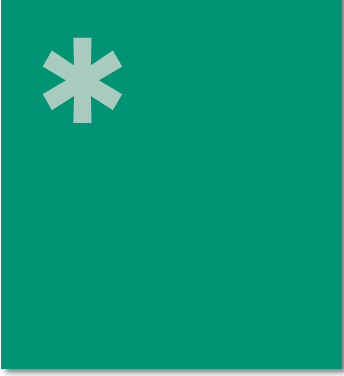
f  
A

- Violations of these laws are dealt with in

State of Florida  
(  
S  
F  
)







### BICYCLE RECOVERY

- Always use your seat belt, make sure everyone else is buckled up.
- Don't drink and drive.
- Use a designated driver.
- Drive defensively.
- Avoid rear-end collisions.
- Check brake lights often, signal before turning or changing lanes.
- Follow at a safe distance.



- Always use your seat belt, make sure everyone else is buckled up.
- Don't drink and drive.
- Use a designated driver.
- Drive defensively.
- Avoid rear-end collisions.
- Check brake lights often, signal before turning or changing lanes.
- Follow at a safe distance.

# ROAD SAFETY

## We need your help!

A majority of the crashes on roads are caused by driver error. Below, you will find some useful tips that can help make your trip pleasant and safe. Please observe these traffic tips and help us prevent crashes.

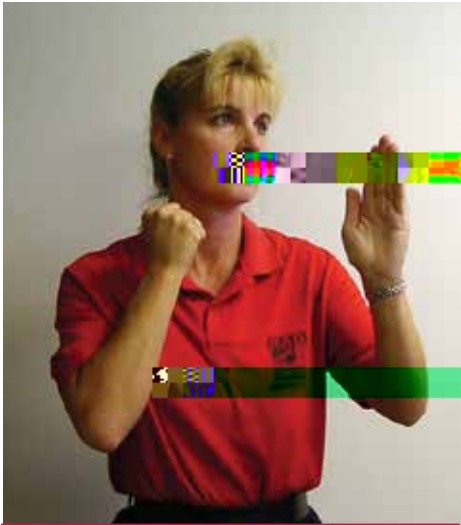
### Please Drive Safely...

- Always use your seat belt, make sure everyone else is buckled up.
- Don't drink and drive.
- Use a designated driver.
- Drive defensively.
- Avoid rear-end collisions.
- Check brake lights often, signal before turning or changing lanes.
- Follow at a safe distance.

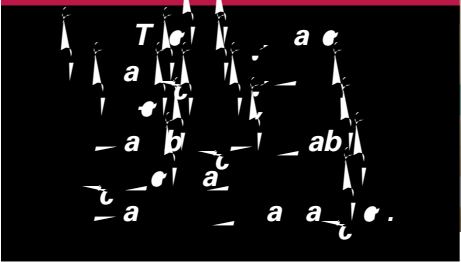
### Please Walk Safely...

- Cross streets at crosswalks.
- Walk on sidewalks.
- If there are no sidewalks, walk on shoulder facing traffic.
- Watch out for all moving vehicles.
- See and Be Seen.





## RAD Objectives



What is R.A.D.? The **R**ape **A**ggression **D**efense System is a program of realistic self-defense tactics and techniques. It is a comprehensive course for women that begins with awareness, prevention, risk reduction and avoidance while progressing to the basics of hands-on defense training. **R.A.D.** **a - a - a** **a** **a**. Members of the University Police Department are currently teaching the RAD System of Physical Defense at the University of South Florida.

The RAD System is dedicated to teaching women defensive concepts and techniques against various types of assault by utilizing easy, effective and proven self-defense tactics. Our system

of realistic defense will provide a woman with the knowledge to make an educated decision about resistance.

Safety and survival in today's world require a definite course of action. We provide effective options by teaching women to take an active role in their own self-defense and psychological well-being.

\*\*\*USFPD offers RAD as a 12-hour basic self-defense





## I. INTRODUCTION (Purpose and Intent)

To establish policy and procedures for the University of South Florida System (USF System) regarding the reporting, investigation and required emergency notification when a student is deemed to be missing.

While the scope of policy and procedures is directed primarily to the staffs of the Division of Student Affairs and the USF System Police Departments, all members of the academic community, students, faculty, staff, and administrators, share the responsibility of reporting to designated USF System officials when they believe that a student is missing.

## II. STATEMENT OF POLICY

If any member of the USF System community has reason to believe that a student is missing, they must be directed to file a report with the USF Police Department or the Department vested with law enforcement authority at the institution or campus in question (herein “designated Police Department”). In collaboration with the Dean for Students office and/or the Department of Housing and Residential Education (if the missing student is a resident student) or the office designated with student affairs oversight, all efforts will be made immediately to locate the student to determine his or her state of health and well-being. These efforts may include, but are not limited to, checking the student’s residence hall room, class schedule, friends, and ID card access; locating the resident’s vehicle; reviewing e-mail contacts; calling a cell phone number and contacting the Dean of the Graduate or Undergraduate Schools and the Dean of the College, if applicable.

For additional information, see “USF System Missing Student Policy 30-025” at <http://generalcounsel.usf.edu/policies-and-procedures/pdfs/policy-30-025.pdf>.

## III. DEFINITIONS

- A. Student – For purposes of this policy, any student who is currently enrolled.
- B. Resident Student – For purposes of this policy, a student who resides in on-campus housing under a housing contract and is currently enrolled.
- C. Missing – For purposes of this policy, a student is presumed missing if he or she is overdue in reaching

home, campus, or another specific location past his/her expected arrival for more than 24 hours, or additional factors lead USF System staff to believe he or she is missing.

D. On-Campus Housing – For the purposes of this Policy, any student housing facility that is owned or controlled by the USF System, or is located on property that is owned or controlled by the USF System, and is within the reasonably contiguous geographic area that makes up USF System campuses, is considered an on-campus student housing facility.

## IV. NOTIFICATION AND INVESTIGATION PROCEDURES

Any USF System employee or student who receives a report that a student is missing, or has independent information that a student is missing, must immediately report the information or evidence to the designated Police Department, Dean for Students Office, and/or the Office of Housing and Residential Education if the missing student is a resident student.

When the student is an on-campus resident, the designated Police Department will open an official investigation and retain status as the primary investigative unit.

When the student is an off-campus resident, appropriate family members and/or associates will be encouraged to make an official missing person report to the law enforcement agency with jurisdiction. The designated Police Department will cooperate, aid and assist the primary investigative agency in all ways prescribed by law.

If the student is not located, notification to the student’s emergency contact (parent or guardian)—indicated in the Banner system, and/or Housing Emergency Contact Information—will be made within 24 hours of the designated Police Department’s receipt of the initial report. In addition, if the student is under 18 years of age and not emancipated, notification will also be made to the custodial parent or guardian.

## V. STUDENT EMERGENCY CONTACT INFORMATION

Students may update their emergency contact information through the University’s Student Information System (OASIS) at any time. The OASIS Terms of Usage, which must be accepted by students every 180 days, informs that while students may receive written notification from the University, all students are responsible for regularly monitoring and maintaining information in their records, including detailed emergency contact information. Emergency contact information registered with the University is confidential and will not be released—except in the event of any emergency to individuals that are legally authorized to obtain it.



*The Higher Education Opportunity Act (34 CFR, 668.49) also known as Campus Right to Know, published October 29, 2009 and effective July 1, 2010, requires all Universities that maintain on campus student housing to develop and publish an Annual Fire Safety Report. Only campuses within the University system that have student housing must publish an Annual Fire Safety Report. This document outlines the University compliance efforts to HEOA Campus Right to Know requirements.*

**T**he Annual Fire Safety report has eight (8) reporting requirements that consist of the following:

**(1) Fire Statistics.** The USF Department of Housing and Education (Housing) has developed the Building Alarms and Fire Reports to compile and track HEA/HEOA-required fire log statistics for the three most recent calendar years for which data are available. A flow chart outlining the process of handling fire alarm activations in Housing buildings is provided on the next page.

**(2) Building Fire Safety Systems.** Housing has developed the Building Fire Systems and Components Report document that lists the fire safety systems devices in each housing building.

**(3) Fire Drills.** The first reporting year is calendar year 2009 and will report from there on. The law requires reporting of a three year period, beginning with calendar year 2009. USF Fire and Emergency Drill Policy number 6-025 addresses procedures and responsibilities.

**(4) Policies on Open Flames, Portable Electrical Appliances.** The Housing and Residential Education website, Resident Hall Policies page, contains this information ([housing.usf.edu/resources/policies](http://housing.usf.edu/resources/policies)). Additionally the Resident Handbook ([housing.usf.edu/resources/forms/pdfs/2012-13\\_Resident\\_Handbook.pdf](http://housing.usf.edu/resources/forms/pdfs/2012-13_Resident_Handbook.pdf)) has this information. The University has a Non-Smoking Areas Policy (number 0-606).

**(5) Procedures for Fire Evacuation.** The Resident Handbook ([housing.usf.edu/resources/forms/pdfs/2012-13\\_Resident\\_Handbook.pdf](http://housing.usf.edu/resources/forms/pdfs/2012-13_Resident_Handbook.pdf)) contains this information. Additionally the USF Fire and Emergency Evacuation Drill Policy (number 6-025) addresses procedures and responsibilities.

**(6) Policies on Fire Safety Education and Training.** The Resident Handbook ([housing.usf.edu/resources/forms/pdfs/2012-13\\_Resident\\_Handbook.pdf](http://housing.usf.edu/resources/forms/pdfs/2012-13_Resident_Handbook.pdf)) contains this information. Additionally the USF Fire and Emergency Evacuation Drill Policy (number 6-025) addresses procedures and responsibilities.

**(7) Fire Reporting.** To reduce the response time to a fire incident, USF requires students and employees to telephone 911 to report all fires. The University Police Department (UPD) will investigate and take appropriate action.

**(8) Future Fire Safety Improvements.** The upgrading of fire alarm systems and devices is priority in Housing buildings as well as increasing the fire safety training of Resident Assistants and Resident Life Coordinators.

## ROLES AND RESPONSIBILITIES

### Environmental Health and Safety

- Coordinates University system compliance efforts and reporting requirements.
- Assists Housing and UPD with annual reporting of fire safety statistics.
- Reviews policies and rules regarding fire safety in Housing buildings and provide recommendations for compliance.
- Reviews fire statistics for annual fire safety report.
- Investigate fire cause and origin in Housing buildings and act as liaison with State Fire Marshal Office and Fire Rescue agencies.
- Serves as university system resource for fire safety procedures and policy development.
- Provides fire safety education and training to students and employees.

### Housing

- Maintains and updates the Building Alarms and Fire Report document.
- Maintains and updates the Building Fire System and Component document.
- Maintains policies in Resident Housing Publication that address open flames, smoking and electrical appliances.
- Maintains policies in Resident Housing Publication that address procedures that students should follow in case of fire.
- Compiles fire statistics annually from Building Alarms and Fire Report and submit to EH&S and UPD for reporting in October.

### University Police

- Receives and records fire alarm activity in Housing buildings.
- Dispatches officer(s) to investigate all fire alarm activations.
- Determines if emergency forces are required and makes contact with emergency forces (Fire Rescue) as needed.
- Maintains reporting format of Annual Fire Safety Report (same as Cleary Report).
- Receives fire statistics annually from Housing and compiles Annual Fire Safety Report with Cleary Report crime statistics.
- Submits Annual Fire Safety Report along with Cleary Report as one report for compliance to HEOA/Campus Right to Know.





H & R	E	B	A	C	C	A	B	F	q. F.	P	D	M	
			A	/	4207 U F M	L	1	30250		1	0	0	0
A	C	/			12402 U F M	D	1	25933		1	0	0	0
B	H				12470 U F M	D	5	57776		1	1	1	1
C	H				4111 C C	D	5	78350		1	1	0	0
C	A				4302 U F H	D	5	42415		1	2	0	0

5F 877 D


0F 877 D F 90 D

F	P	D	N	
P				
N NF -640-1	15	10	0	43
N NF -640	20	5	0	44
N NF -640	20	164	4	16
N NF -2-3030	15	202	77	106
N NF -640	12	53	96	59
N NF -640	12	55	90	57
N NF -640	14	90		91
N NF -640	15	58		64
N NF -2-3030	15	306		27
N NF -2-3030	18	377		34
N NF -2-3030	3	20		32
N AFP-200	3	20		32
N AFP 200	2	15		25
N AFP-200	3	20		32
N AFP 200	3	20		32
N AFP-200	3	20		32
N AFP 200	3	20		32
N AFP-200	2	5		2
N AFP-200	10	29		8
N AFP-200	10	29		8
N AFP 200	13	37		10
N AFP-200	10	29		8
N AFP-200	12	32		10
N AFP-200	13	37		10
N AFP-200	13	36		10





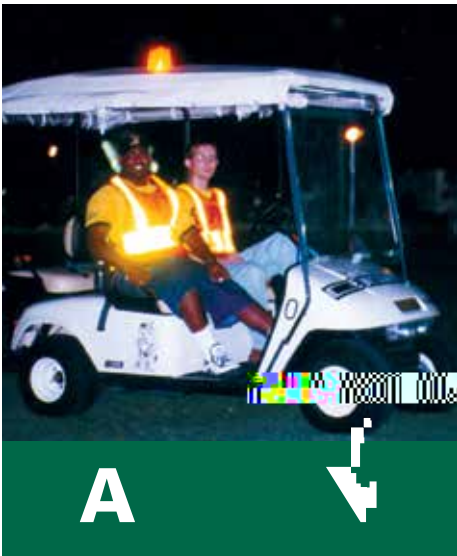




1. Emergency response and notification procedures are contained within the USF Emergency Operations Plan (EOP), which details the process USF will use to confirm an emergency or dangerous situation; determine the appropriate segment(s) of the campus community to be notified, determine the content of the notification, and initiate the notification system (e.g. MoBull, siren systems, email blast, etc.), unless issuing the notification would compromise efforts to assist a victim, or to contain, respond to, or otherwise mitigate the emergency. For more details, please consult the USF EOP for the Tampa Campus, available online at: [usf.edu/pdfs/USF-Emergency-Operations-Plan.pdf](http://usf.edu/pdfs/USF-Emergency-Operations-Plan.pdf). Briefly, the USF EOP outlines our adherence to planning standards such as the National Incident Management System (NIMS), and related guidance on the use of the Incident Command System (ICS). ICS provides for the effective and efficient management of domestic incidents and events by integrating a combination of facilities, equipment, personnel, procedures and communications into a common organizational structure.

2. The EOP lists standing priorities for all Incident Command-





# B



USF Parking & Transportation Services offers the USF community a **FARE-FREE**, year-round transit service on the Tampa Campus. See our website ([www.usf.edu/bullrunner](http://www.usf.edu/bullrunner)) for more information or call (813) 974-6902.

View the BullTracker™ online  
or from your hand-held mobile device at:  
[www.usfbullrunner.com](http://www.usfbullrunner.com)